

Park Plaza County Hall London



This contemporary 4-star design hotel boasts 398 state of the art guest rooms, Spectrum Restaurant, with a gastronomic selection of contemporary British cuisine, Spectrum bar, 6 function rooms with natural daylight, an Executive Lounge, a fitness suite with sauna, steam and treatment rooms, and Wi-Fi Internet throughout.

Location

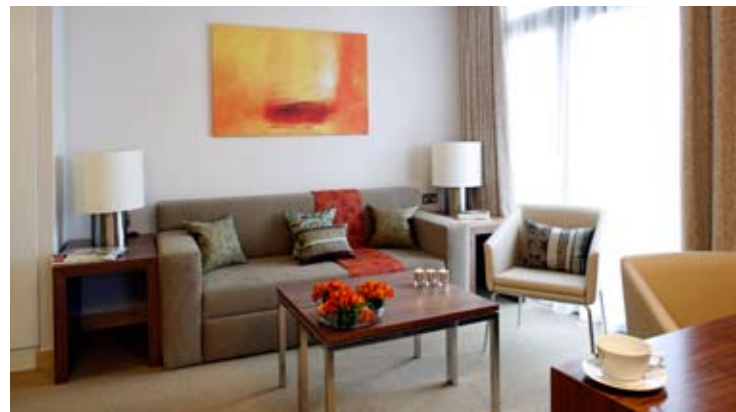
- Park Plaza County Hall London is perfectly located just south of Westminster Bridge overlooking the River Thames and is within walking distance of many of the city's most famous attractions including the London Eye, Big Ben and the Houses of Parliament, the London Aquarium, National Theatre and the South Bank Centre
- Park Plaza County Hall is located minutes from London Waterloo mainline rail and underground station – providing connections to the Jubilee, Northern and Bakerloo tube lines as well as mainline rail to the South of England



- | | | |
|--|---|-------------------------------|
| 1 Park Plaza County Hall London | 2 The Houses of Parliament & Big Ben | 3 The London Eye |
| 4 London Aquarium & Dali Universe | 5 Westminster Abbey | 6 Tate Britain Gallery |
| 7 Buckingham Palace | 8 National Gallery | 9 Regent Street |
| 10 Southbank Centre | 11 National Theatre | 12 Tate Modern Gallery |

Guest Rooms and Facilities

- 398 stylish guest rooms including superior rooms, studios, junior suites and seven luxury apartments, most of which boast kitchenettes and separate living spaces as well as bathrooms with both walk in power shower and bathtub



- All rooms are fully air-conditioned and feature a large work desk, plasma screen televisions and an interactive entertainment system with music and movies on demand as well as a laptop safe, iron and ironing board, hair dryer, tea and coffee making facilities and Wi-Fi internet. Rooms on the higher floors boast impressive views of the River Thames, Houses of Parliament, the London Eye and the City of London

Meetings & Events

| | Metres (LxW) | Theatre | U-shape | Boardroom | Cabaret 8 Del/Table | Hollow Sq | Classroom | Dinner Bar/No Bar | Reception |
|---------------------|------------------------------------|---------|---------|-----------|------------------------|-----------|-----------|----------------------|-----------|
| First Floor | | | | | | | | | |
| Putney | 5.6 x 5 (28 m ²) | 20 | 15 | 12 | 16 | 12 | 18 | 20 / n/a | 35 |
| Westminster | 7.3 x 5 (36.5 m ²) | 35 | 18 | 18 | 24 | 20 | 24 | 30 / 40 | 50 |
| Combined | 12.9 x 5 (64.50 m ²) | 70 | 27 | 30 | 48 | 30 | 48 | 45 / 55 | 100 |
| Millennium | 7.1 x 7.1 (50.41 m ²) | 50 | 18 | 20 | 32 | 24 | 24 | 30 / 40 | 60 |
| Battersea | 4.9 x 7.1 (34.79 m ²) | 35 | 14 | 16 | 16 | 16 | 18 | 20 / 30 | 35 |
| Combined | 12 x 7.1 (85.20 m ²) | 100 | 36 | 40 | 64 | 42 | 60 | 70 / 80 | 120 |
| Second Floor | | | | | | | | | |
| Vauxhall | 7.1 x 5.1 (36.21 m ²) | 35 | 18 | 18 | 24 | 20 | 24 | 30 / 40 | 50 |
| Lambeth | 6.6 x 5.1 (33.66 m ²) | 20 | 15 | 12 | 16 | 12 | 18 | 20 / n/a | 35 |
| Combined | 13.7 x 5.1 (69.87 m ²) | 70 | 27 | 30 | 48 | 30 | 48 | 45 / 55 | 100 |

Measurement for the Executive Lounge: Seating area 50.4m² Buffet area 2.6m²

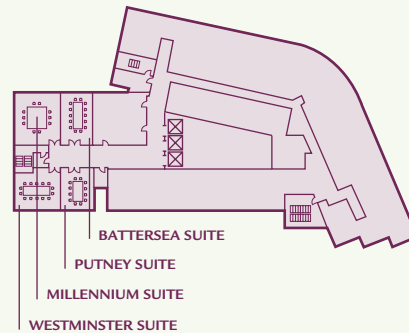
Mezzanine Lounge 30 guests (max)

Meeting facilities include

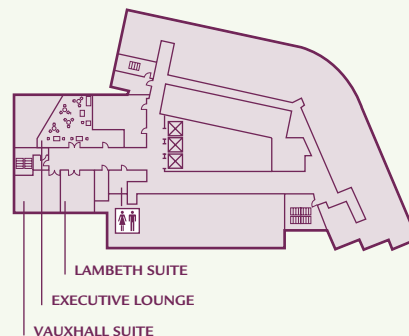
The hotel offers six impressive contemporary meeting rooms with breakout facilities. All rooms offer natural daylight, Wi-Fi internet and the latest audiovisual and technical equipment. These rooms are ideal for conferences, meetings, private dining and receptions.



First Floor



Second Floor



Restaurants & Bars

This friendly hotel boasts the sleek Spectrum Restaurant, suspended on the Mezzanine level and set under the spectacular 14-storey atrium. The all day Spectrum Bar basks in daylight from the stunning glass front and offers tables outside for city alfresco dining. The bar serves a hearty breakfast in the morning, coffee during the day and lunchtime favourites. In the evenings, Spectrum Bar transforms into a stylish after work cocktail bar or a romantic rendezvous destination.

The Spectrum Restaurant is a contemporary British dining concept where the myriad of colours from the hotel's atrium, blends perfectly with the wide selection of fine, locally sourced ingredients, creating a high quality wholesome menu full of old favourites and quirky mouth-watering dishes.



Park Plaza County Hall London

1 Addington Street
London, SE1 7RY
United Kingdom

T: +44 (0) 20 7021 1800
T: +44 (0) 20 7021 1801
ppchsales@pphe.com

GDS Chain Code: PK
www.parkplaza.com/countyhall